

(CABG)

7

v w x y z { | }  
v w x y ~ € z { , f 100 mg , ... † ‡ ^ % § < ( E )  
' ' " " • - z { v w x y ~ € z { - 75 ~ 100 mg/

™ š › œ Ÿ

™ j † Ÿ

H

d

v

™ Ÿ

™ £ ¨ Ÿ

PEGASUS ¥ |

ACS 12

™ § Ÿ

™ " { Ÿ

75 100mg 1

© ^ a

---

×

12

« 7 -

---

PEGASUS ¥ |

24

® - ° ±

2 3

μ

η . 1

TM

ÿ

ο . 1

TM » ¼ ÿ

PLATO

(7.4% 5.4%)

PEGASUS

( 60 mg

16.1%

8.5%)

( TM ÿ )

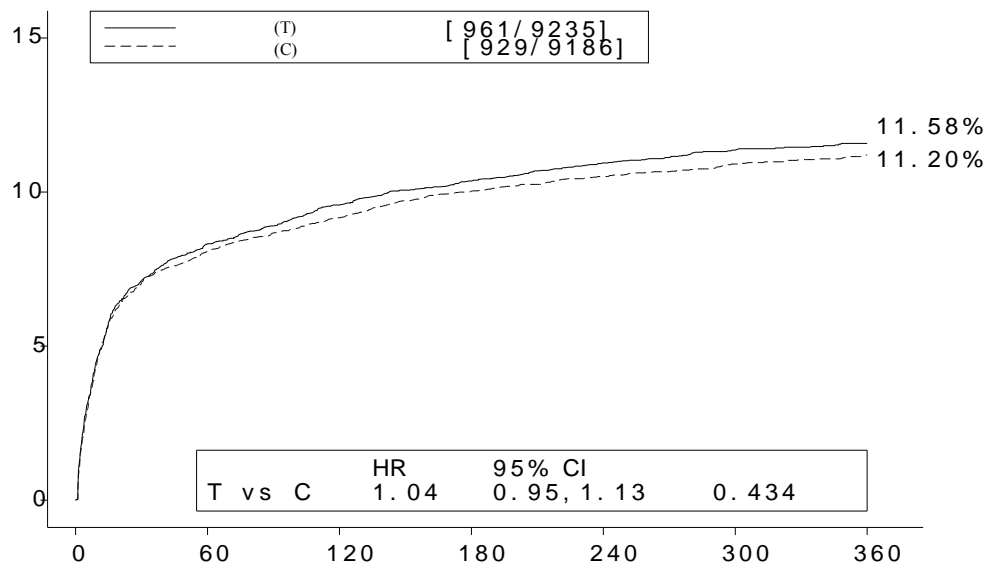
<

½¾ Å Å Å	Å Å Å Å	Å Å	Å Å
良性、恶性及性质不明的肿瘤（包括囊肿和息肉）			a
血液及淋巴系统疾病	b		
免疫系统疾病			c
代谢及营养类疾病	d	/	
精神病类			
各类神经系统疾病			
眼器官疾病			e
耳及迷路类疾病			
血管疾病			
呼吸系统、胸及纵隔疾病		f	

胃肠系统疾病		g	
皮肤及皮下组织类疾病		h	
各种肌肉骨骼及结缔组织疾病			i
肾脏及泌尿系统疾病			
生殖系统及乳腺疾病			k
各类检查		d	
各类损伤、中毒及手术并发症			

a  
b  
c  
d  
e  
f  
g  
h  
i  
j  
k  
l

( >50% )



T	9235	7246	6826	6545	5129	3783	3433
C	9186	7305	6930	6670	5209	3841	3479

	90mg, $\bar{E}\bar{C}\bar{E}\bar{E}$ N=9235	$\bar{E}\bar{E}\bar{I}$ N=9186	P-值*
			<

Á Á Í Í  
 Í ð / Ñ Ó Ó

>50 g/L

≥4

Í ð

30-50 g/L

2 3

É ð

TIMI Í ð

50 g/L

TIMI É ð

30-50 g/L

\*p-

Cox

CABG 相关出血:

非-CABG 相关出血和非操作相关出血:

颅内出血:

PEGASUS 与 对照

PEGASUS

3

3.

36

Kaplan-Meier

(PEGASUS)

	60 mg 阿司匹林 + v wx y N=6958		v wx y N=6996		
× Ø %	KM%	Û (95% CI)	KM%		p-Û
	2.3	2.32 (1.68, 3.21)	1.1	-	<0.0001
	0.3	1.00 (0.44, 2.27)	0.3		1.0000
	0.6	1.33 (0.77, 2.31)	0.5		0.3130
TIMI	1.6	3.61 (2.31, 5.65)	0.5		<0.0001

TIMI Í Đ				(Hgb)	≥50 g/L
Hgb	(Hct)	15%			
	7				
ICH					
Ý TIMI Í Đ			TIMI		
TIMI É Đ			30-50 g/L		
TIMI P ß à					
PLATO Í Đ	/Ñ Ò Ó				
	/			>50 g/L	≥4
Ý PLATO Í Đ			30-50 g/L	2-3	
PLATO É Đ					

á â ã ä

PEGASUS 14.2% 60 mg 5.5% ( [ COPD ])

â æ ç è é

ê « ë

PLATO 5.9% 90 mg 7.4% >50% >50%

PLATO

PEGASUS 4% 60 mg >50%

( )

PLATO 22%

90 mg 60 mg 13% PEGASUS 5.5%

7% 15% 9.1%, 8.8% 7.5%

PEGASUS 90 mg 60 mg 6.3% 5.6%

1.5% PLATO

0.2% 0.1% PEGASUS 90 mg 60 mg /

1.6% 1.5% 1.1%

ì í

PLATO 3000 Holter

6.0% (3.5%) 1 2.2%

1.6% PLATO PEGASUS ( )

2 3 AV ) PLATO

90 mg 1.7% 1.5%

PEGASUS 60 mg 1.2% 0.9%

™ ì ÿ

™ ð ñ ò ÿ

\_\_\_\_\_

•

•

° . 1

ó f ı ı Ñ <sup>TM</sup> ÿ <sup>TM</sup> ÿ

—

á â ã ä

<sup>TM</sup> ÿ

« ë ô õ ö ÷

ACS

ø ù

ú ù

™ ÿ

™ ÿ

™ ÿ

ù ý | þ ÿ ÿ

™ ò ù ÿ

—

—

™ 2 3 ÿ

™ ´ μ ÿ

™ ÿ

TM ÿ Ÿ  
 P-gp CYP3A4 CYP3A4 (P-gp)  
 P-gp

Ÿ

**CYP3A z**

● CYP3A4 -

● CYP3A4 - C<sub>max</sub> 69%  
 AUC 2.7 C<sub>max</sub> 38% AUC  
 CYP3A4 ( )

**CYP3A z**

CYP3A

v wx y

◦  
 P-gp Ò CYP3A z

TM ð ñ ò Ÿ

CYP3A4



40 mg/



P-gp ( ÷ )

P-gp

ì í

^

™ 1 { Ÿ

™

Ÿ

™ < (E æŸ

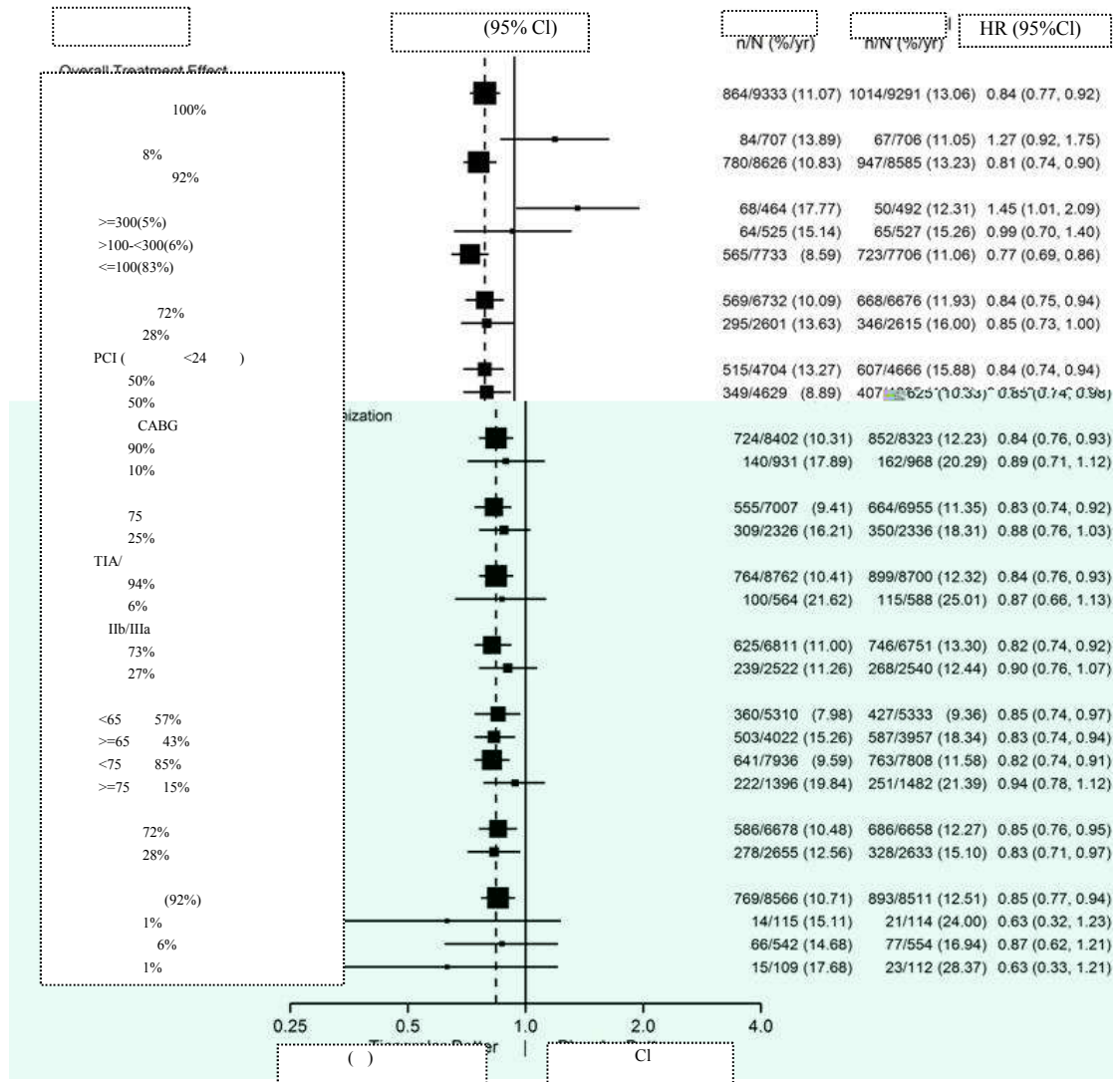
ACS

● PLATO ¥ | ( © ^ a )

	<b>N=9333</b>	<b>Ê È ĩ N=9291</b>	<b>Û (95% CI)</b>	<b>p-Û</b>

ST

ST



PLATO ¥ |

¥ | 0 0

---

---

---

---

---

---

“ ” —

---

---

---

---

---

“ ”





RRR 17% MI RRR 16% RRR 25%)  
 1 360 (17% RRR) 361 (16% RRR) RRR 3

2 ADP 1  
 60 mg

60mg 75 42% 29%  
 23~31% 75 10% 42%

Á

Pegasus ¥ | ¥ | Ô Õ

383 127 90mg 129  
 60mg 127

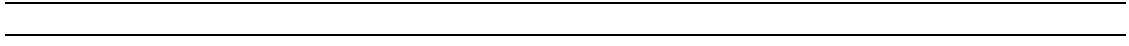
90 mg HR 0.54 95% CI 0.20, 1.45 MI 60 mg HR 0.70 95% CI 0.28, 1.75  
 8 PEGASUS 95% CI PEGASUS 95% CI

TIMI PLATO TIMI TIMI PEGASUS PLATO

PEGASUS AE  
 PEGASUS AE  
 TIMI 90 mg 60 mg  
 1 0.8% 2 1.6% 0 0.0% 1  
 60mg PLATO  
 TIMI 90 mg 60 mg PLATO  
 1.7% 2 1.6% 0 0.0% 2

	90mg bid N=127				60mg bid N=129		x Z N=127	
® a	Ó	KM%	HR (95% CI)	Ó	KM%	HR (95% CI)	Ó	KM%

	90mg bid N=120	60mg bid N=125	N=123
--	-------------------	-------------------	-------



---

a 'TIMI TIMI ICH

TM ÿ

ÿ

P2Y<sub>12</sub>ADP (CPTP)

-1 ENT-1



TM

Y

¥ |

™

ÿ

® a

â

Á

® - ° ±

´ μ °

2 3

0

¶ . 1

° , 1

IPA

U

™ Ÿ

™ Ÿ

™ } a Ÿ

™ Ÿ

™ Ÿ

™ § € ° Ÿ

88

™ Ó ÿ

88

0537-2271888

0537-2983615

272104

<http://www.lkpc.com>